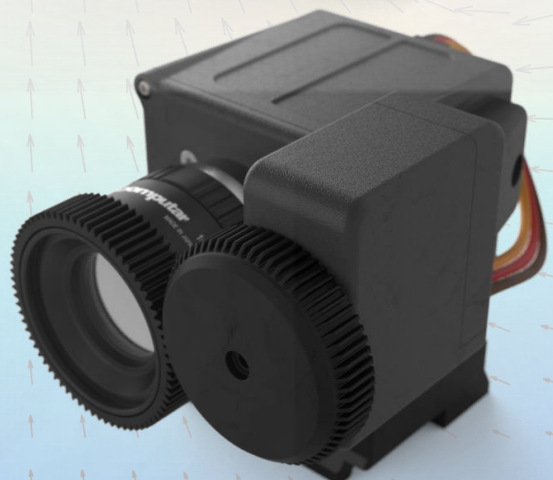


OPTOcam 2/80: Camera for Particle Image Velocimetry

The OPTOLUTION OPTOcam 2/80 is an affordable 2.3 megapixels camera with 160 frames per second (up to 400 frames per second at reduced resolution) made for PIV studies in PIVlab.

Main Features:

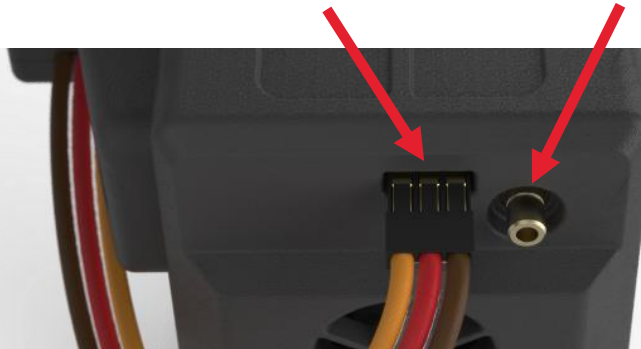
- Designed for PIVlab (a free Matlab toolbox)
- Lens included (default: 16mm f1.4, alternatively 8 mm or 12 mm)
- Prepared for remote focus control (auto focus from PIVlab)
- 1936 x 1216 pixels (2.3 MP)
- Band pass filter included (default: 450 nm +/- 25nm)
- Global shutter
- 1/2.3" format, 7.9 mm sensor diagonal
- 3.45 μm pixel pitch
- 160 fps (80 double images per second) at 8 bit
- 80 fps (40 double images per second) at 12 bit
- 400 fps (200 double images per second) at 8 bit and 1600 x 480 pixels resolution
- Minimum interframe time 61 μs (8 bit) and 128 μs (12 bit)
- CS-mount
- USB 3.0 interface
- 5 Gbps USB cable included (default: 3 m, alternatively 5 m)



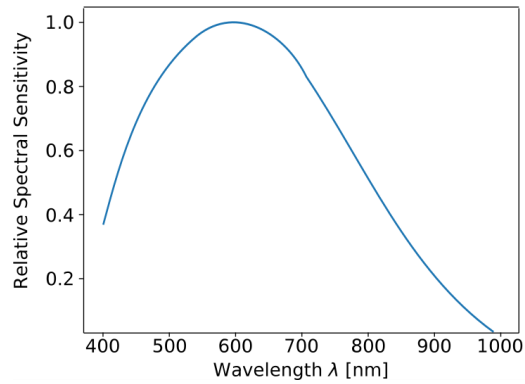
OPTOcam 2/80: Camera for Particle Image Velocimetry

Remote lens control connection

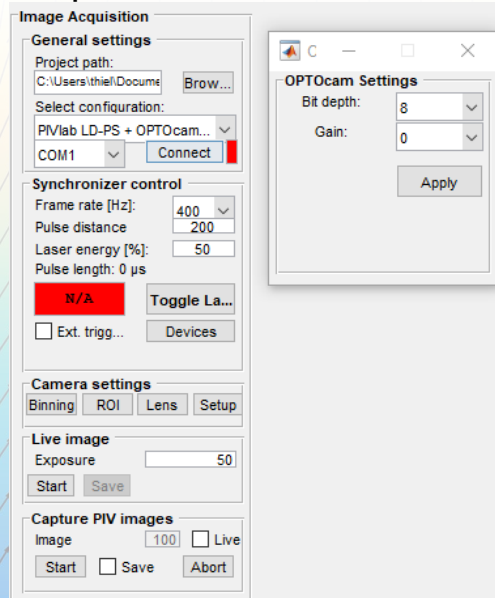
Synchronizer input



Spectral response



Simple PIVlab interface



OPTOcam 2/80: Camera for Particle Image Velocimetry

