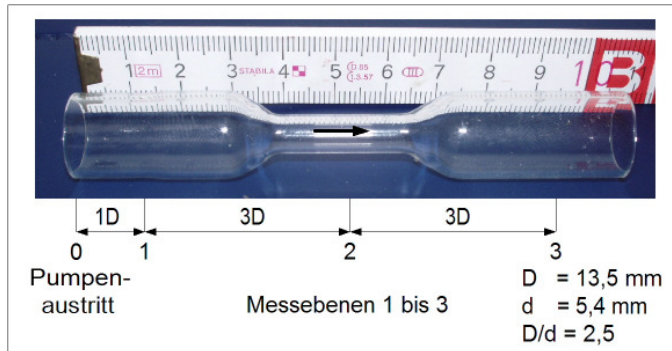


LDV-Messungen der axialen Geschwindigkeitsverteilungen in einem „Venturi-Rohr“

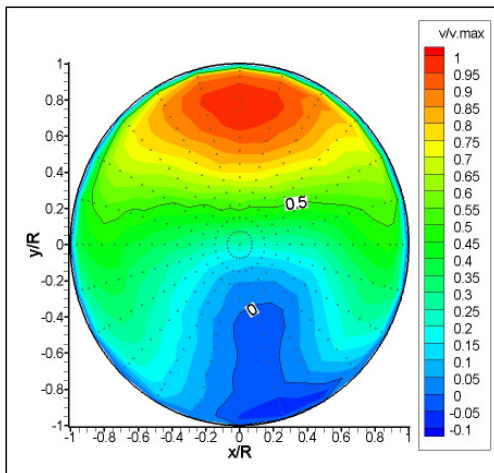


Wasser, $t = 10 \text{ }^\circ\text{C}$
 $Re (D) = 4'800$
5'000 LDV-Bursts/Messpunkt

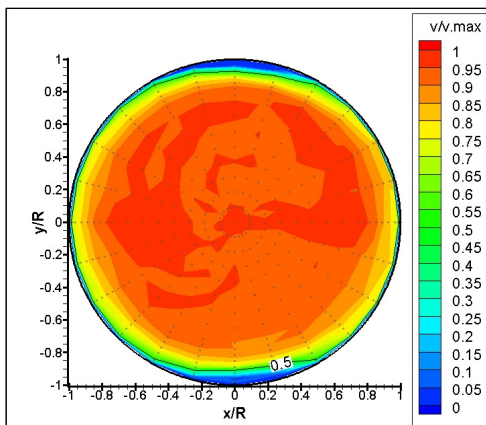
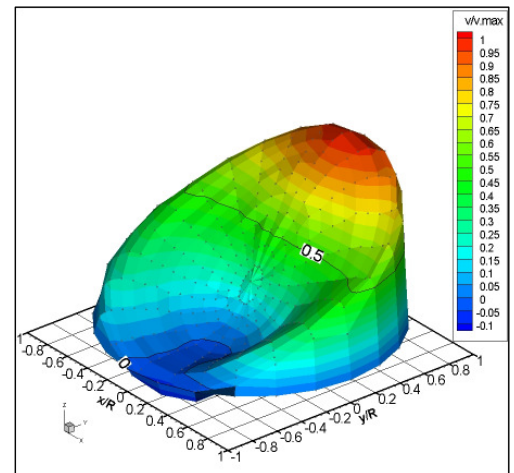
Messebene 1:
 $v_{\max} = 1,0927 \text{ m/s}$; 385 Messpunkte

Messebene 2:
 $v_{\max} = 3,1241 \text{ m/s}$; 241 Messpunkte

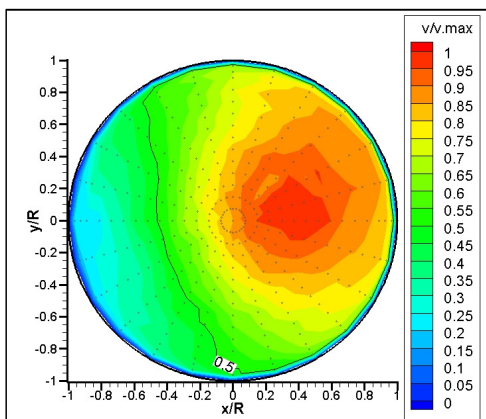
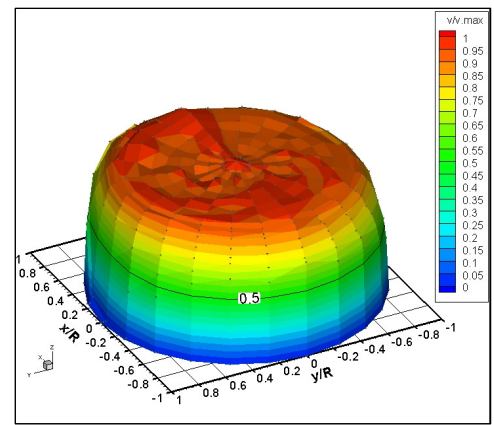
Messebene 3:
 $v_{\max} = 0,9341 \text{ m/s}$; 385 Messpunkte



Messebene 1



Messebene 2



Messebene 3

